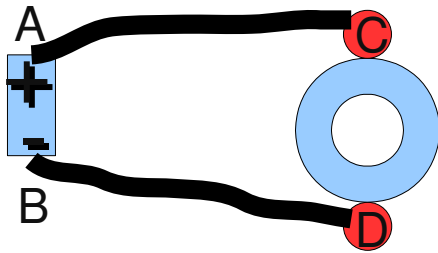


## Parallel Circuit Lab

What is a series circuit?

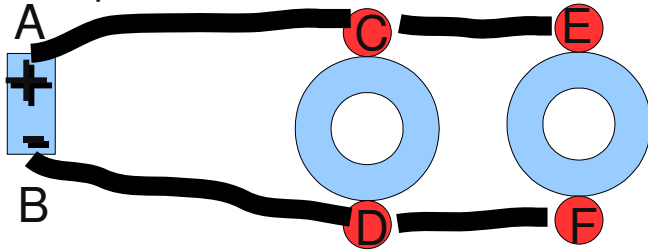
What is a parallel circuit?

Wire up Circuit 1 as shown below, then turn multimeter to 20 volts DC.



Test #	Black Probe	Red Probe	Volts
1	A	B	V
2	C	D	V
3	D	C	V

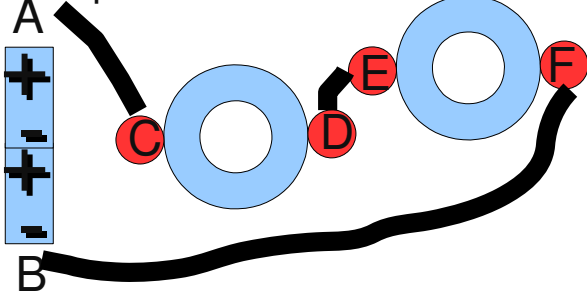
Wire up Circuit 2 as shown below.



Is Circuit 2 in series or parallel?

Test #	Black Probe	Red Probe	Volts
1	E	F	V
2	E	D	V
3	F	C	V
4	B	E	V

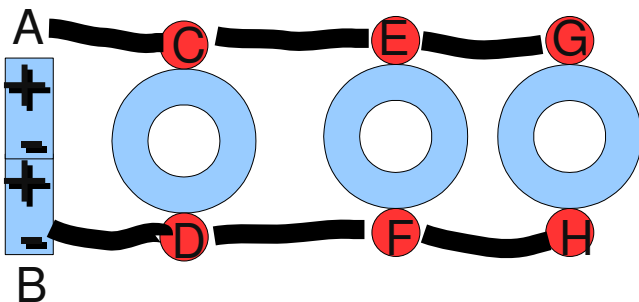
Wire up Circuit 3 as shown below.



Is Circuit 3 in series or parallel?

Test #	Black Probe	Red Probe	Volts
1	A	B	V
2	D	E	V
3	C	F	V
4	B	D	V

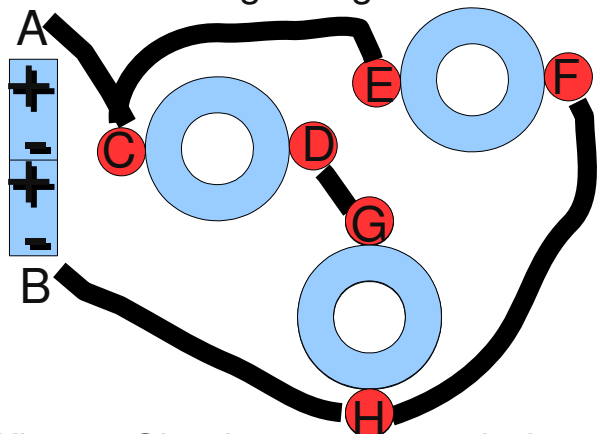
Wire up Circuit 4 as shown below.



Is Circuit 4 in series or parallel?

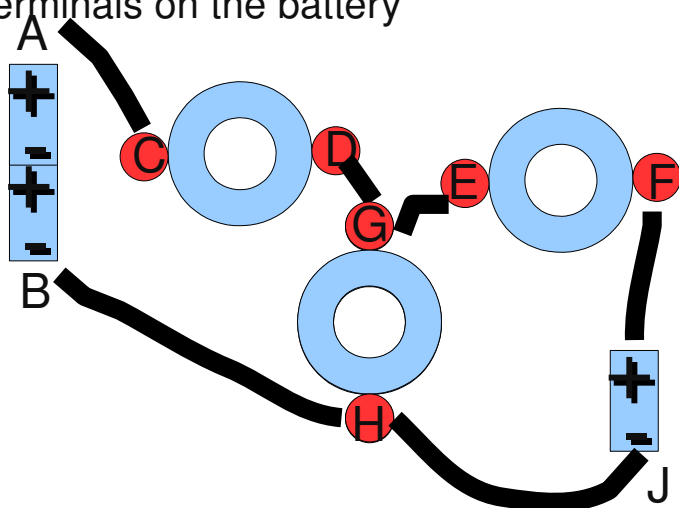
Test #	Black Probe	Red Probe	Volts
1	A	D	V
2	E	H	V
3	F	C	V
4	B	E	V

Wire up Circuit 5 as shown below. Double check all the connections the write down the voltages regardless of if all the lights light. Some may be too dim.



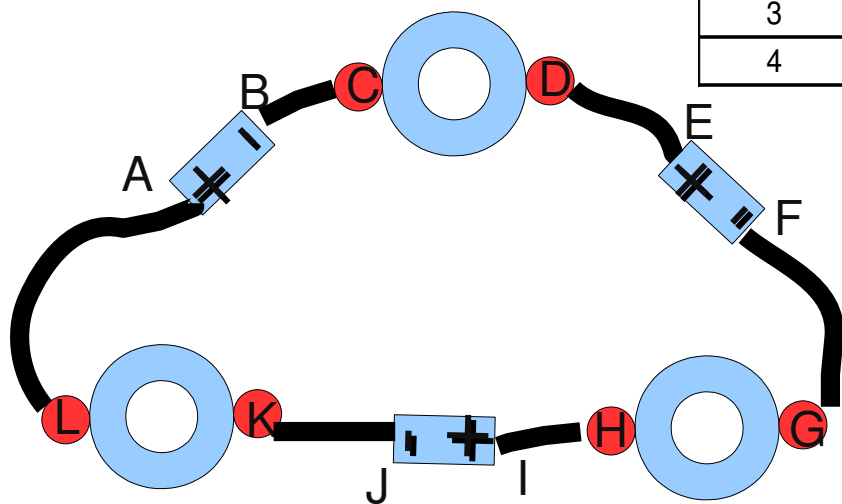
Test #	Black Probe	Red Probe	Volts
1	H	C	V
2	E	G	V
3	B	F	V
4	E	H	V

Wire up Circuit 6 as shown below. **Double check** the positive and negative terminals on the battery



Test #	Black Probe	Red Probe	Volts
1	H	F	V
2	E	G	V
3	A	J	V
4	E	H	V

Wire up Circuit 7 as shown below. **Double check** the positive and negative terminals on the battery



Test #	Black Probe	Red Probe	Volts
1	A	B	V
2	C	H	V
3	F	C	V
4	L	D	V